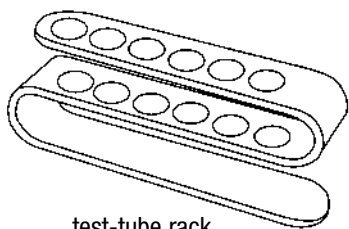


# Some Common Laboratory Equipment



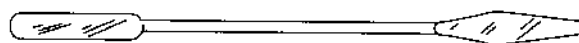
test tube



test-tube rack



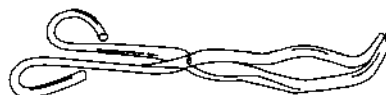
test-tube holder



spatula



scoop



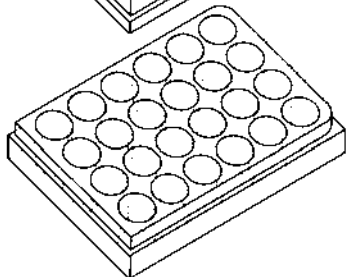
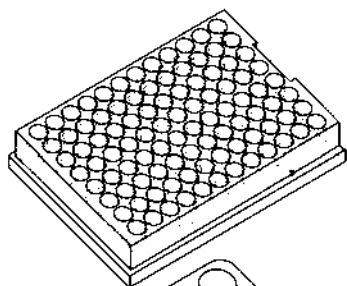
tongs



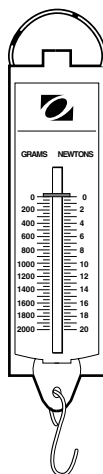
rubber stoppers



forceps



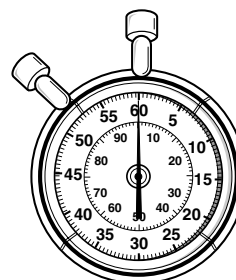
well plates  
(24- and 96-well)



spring scale



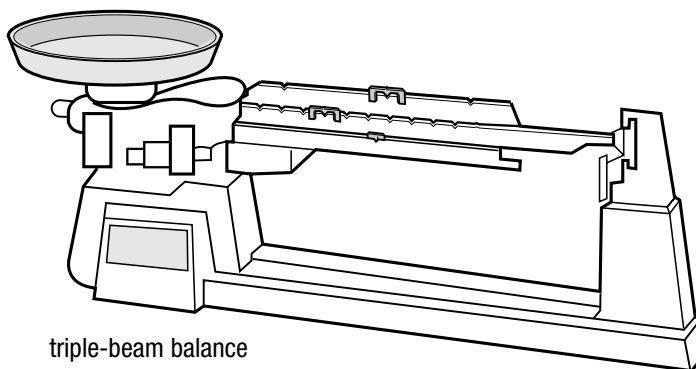
magnetic  
compass



stopwatch

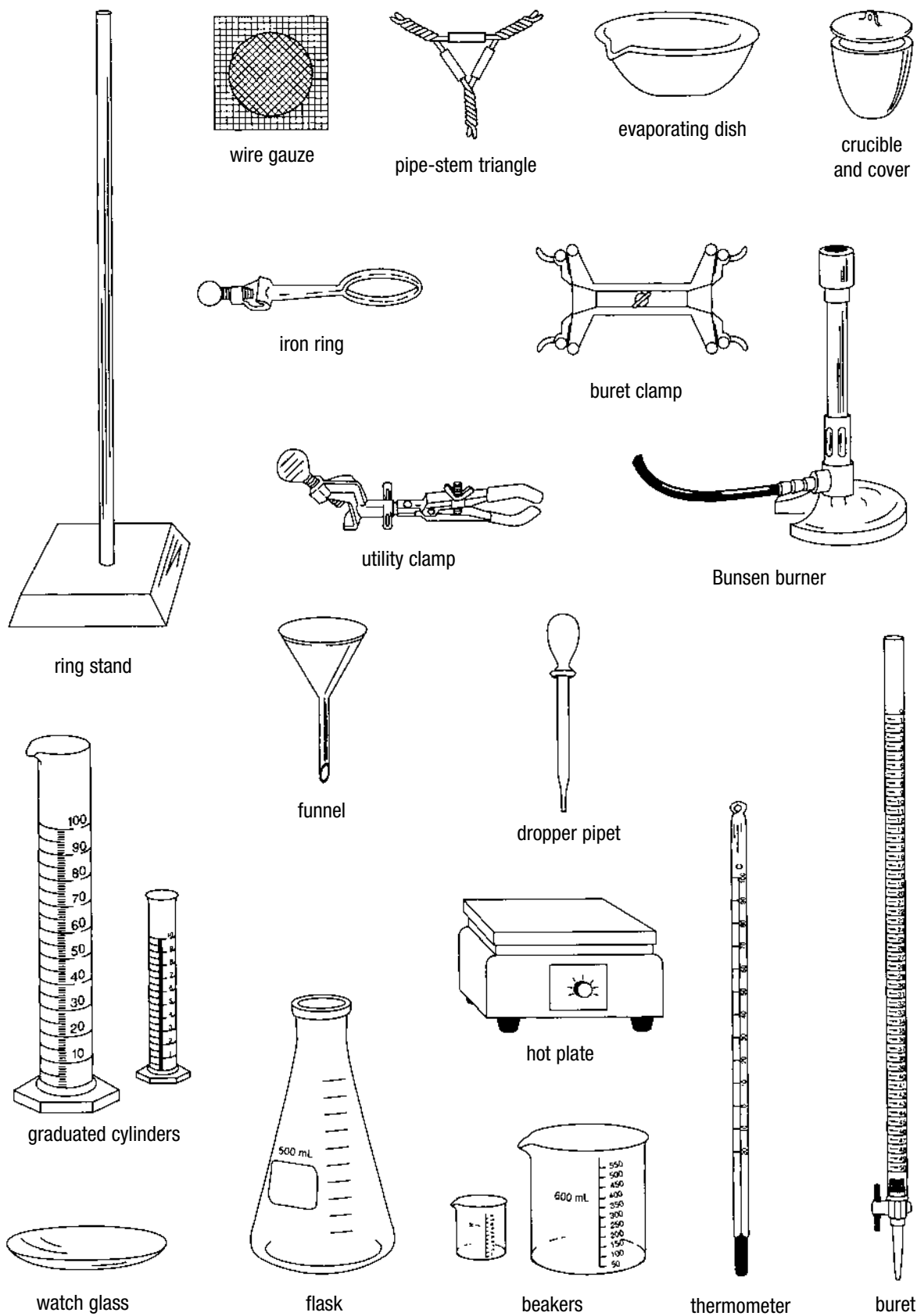


magnifying  
glass



triple-beam balance

## SOME COMMON LABORATORY EQUIPMENT (continued)



© Pearson Education, Inc., publishing as Pearson Prentice Hall. All rights reserved.